

[Read More](#)

SKU:

Price:

Stock: instock

Categories: [Uncategorized](#)



Product Description

Apochromatic stereo telescope system with 8:1 zoom manually both sides operating up to 8 Positions Click Stops **Technical Specification :-** Optics : CMO Type Objective : 1.0x (FWD) 60 mm Eye Piece : 10x Total Magnification : 80x to 300x Resolution : 801 lp/mm Binocular tube : inclination of 35° Photo tube : 100/100 or 50/50 with observation Profile column : 480 mm (10kg load capacity) Transilluminators : Flat LED Reflected Light : Double Spot Illuminator K LED Camera Adapter : C-Mount Light : LED Fluorescence **Camera :-** Type : Colour camera Pixel count : 3840*2160 (8 Megapixels) Exposure range : 0.06 ms to 1 Frame rate : 30 fps Spectral sensitivity : 400 nm – 700 nm Resolution : 4k Drive :USB flash drive Applications :digital classroom Interfaces : HDMI, USB 3.0 Type Source : Microscope, camera and synchronization of the system **SPARE :-** Software :Image acquisition Computer : i7 processor,16 GB RAM,1TB SSD,



AGN ENTERPRISES

MANUFACTURER & SUPPLIER
ALL KINDS OF LABORATORY EQUIPMENTS



diopter adjustment to accommodate different users comfortably. **Eyeieces:** High-quality eyepieces (WF10x or WF15x) with adjustable eyecups for eyeglass wearers. **Objective Lenses:-** Typically, stereo microscopes have interchangeable objective lenses or continuous zoom lenses. Ensure they provide clear, distortion-free images. **Illumination:** Bright and adjustable LED illumination, preferably with incident (top) and transmitted (bottom) lighting options for different specimen types. **Camera Compatibility:** Check if the microscope is compatible with digital cameras for image capture. It should have a camera port or a dedicated trinocular head for camera attachment. **Camera Specifications:** Consider the camera resolution, sensor size, and connectivity options (USB, HDMI, Wi-Fi) depending on your imaging and documentation needs. **Stand:** A stable and adjustable stand with coarse and fine focus adjustments for precise focusing. **Software:** Optional but beneficial, microscope software for image capture, measurement, and analysis.

[Read More](#)

SKU:

Price:

Stock: instock

Categories: [Uncategorized](#)



Product Description

Definition :- Specifically designed for growth of the Algae in flasks. It provides adequate space with controlled temperature, humidity and light conditions. **Specification :-** Volume : 600 Liters Illumination : Four Tier LED Light Type : Horizontal shape Inner Working area : 2m² . Access Port : 1.25" One CO₂ range : 1 to 10 % Interface : Graphical interface Controller : Programmable controller Sensor inputs : Three wires RTD sensor inputs Plant growth height : 30 cm on each tier Temperature : 15° to 45°C (±0.5°C) Safety : Alarm, the controller shut down the chamber and restart when the temp returns to normal system restart automatically when the internal temp is normal. Touch screen controller : High definition IPS (1280 x 800) Monitoring : Microprocessor Based Touch Screen for real time monitoring. Display : Trend graphs Display directly on screen for both Set-point and Actual conditions Programs : Display current set-points and process values, alarm status, alarm settings, program operation mode,



AGN ENTERPRISES

MANUFACTURER & SUPPLIER
ALL KINDS OF LABORATORY EQUIPMENTS



Air circulation inside chamber adjustable air diffuser - Lift-off hinge design allows for simple removal of door - Top Mounted Air-cooled condensing unit with hot gas bypass system - Ceiling mounted evaporator coil incorporates twin air circulation fans - Solenoid valves have extended stem for quiet and long-life operation. - The system restart automatically when the internal temp is normal. - One door providing full access to chamber interior, magnetic gasket, with observation window in front of door with light cover - The LED light cool white in color. - Tier Light Measured @6" From Lamp Bank. - Run 24 hour multi-steps program in ramping mode, non-ramping mode, run non-24 hours program in elapsed time - Sequence multi-step programs, Dual experiment protection, two calibration offsets per input channel, Light lifetime maintenance activated - The accumulated hours can be reset for each output - Three wires RTD sensor inputs, visible alarm displays with audible buzzer - Power failure event logging - Ambient temperature monitoring - Digital lighting control, troubleshooting with up front Diagnostics Menu - Uniform Light Intensity programmable from 15 to 100% dimmable 300μmoles - Shelf and light canopy adjustable in ½" increments also removable without any tool. - Temperature safety alarm, the controller shut down the chamber and restart when the temp returns to normal. **Accessories :-** - Power socket 15 Amp -2Nos - CO2 Cylinder - Co2 Regulator - Voltage stabilizer - Cord & plug - Warranty Card - Instruction Manual

[READ MORE](#)

SKU:

Price:

Stock: instock

Categories: [Uncategorized](#)



Product Description

Technical Details :- Carrying Trolley : Made of Mild Steel Size : 15x15 cm wheels : 6-inch diameter Tank : Stainless Steel Tank Capacity : 12 Ltr Tank Material : Made of Stainless Steel Filler Neck : Filler neck at the top of tank to top up and fill oil to tank Drain Plug : Drain plug at the bottom of the tank to empty Dip Stick : Stainless steel dipstick is used to check the oil level of the tank. Air Pressure Nozzle : Air pressure nozzles fitted on the top of the steel tank Air pressure : up to 60 PSI Relief Valve : Relief valve fitted on the top of the steel tank to relieve the air pressure automatically Pressure Gauge : Pressure gauge of 63 mm diameter Output Connection : Output connection from the topside of the tank Hydraulic Filter : Hydraulic filter of 03 microns Hand Pump : Hand pump to pressurise the storage tank up to 60 PSI **Features :-** * Cylindrical shape with 30 cm diameter and 45 cm length approximately. * The cap provided air tight with rubber seal. * The range of 100 PSI fitted at the top of the tank to monitor tank pressure. * Flame resistant with stainless steel braided length up to 10 metre **SPARES INCLUDING :-** * Power cable and Plug * Instruction Manual * Warranty Card



[Read More](#)

SKU:

Price:

Stock: instock

Categories: [Uncategorized](#)

Product Description

Description :- - The controller features a display that is easy to read at any angle during transport. - Display for air and skin temperature help you maintain, control and provide essential information about the infant's thermal support. - Microprocessor controlled system with air and skin modes of operation. - Display both temperatures i. e. Air/Skin temp along with Set temp. - Soft touch operation with digital display and extensive alarms. **Technical Data :-**

Type : Trolley mounted Battery backup : 6 hrs Holding capacity : 2 Oxygen cylinders O2 concentration range : 25-75 % Internal noise level : 45db Standards : ISO 9001 & ISO 13485

Alarm : Patient temperature, Air temperature, Probe failure and System failure alarm **Features**

:- - Sliding bed and 3 access doors for ease of access for patient care - Transparent double wall hood to decrease radiant heat loss. - Access ports for IV, respiratory tubings and monitor cables - Air filter capability to remove 99% airborne particles - Able to work with ambulance battery - CE, IEC 60601 certified

Accessories :- - Plug & Cable - Instruction Manual - Warranty Card



Price:

Stock: instock

Categories: [Uncategorized](#)

Product Description

Technical Specification :- Weighing Plate Depth : 240 mm Linearity : ± 0.15 g Dimensions : 350 x 390 x 120 mm (WxDxH) Weighing Plate : 340 x 240 mm (WxD) Maximum Load Capacity : 8 kg Plug Type : Universal Readability : 0.05 g Reproducibility : 0.05 g Auxiliary Energy : Battery/mains connection Adjusting Program : External Weight of Balance : 7 kg Display : LCD for easy reading Housing : Robust plastic die-cast, ensuring durability

Features :- * Pre-Tare Function the container weight, enabling direct net weight measurements * Enables remote control and data transfer to external devices and computers, * Optional Battery Operation: Supports 4 x 1.5 V AA batteries for up to 20 hours Streamlining operations * Interface Adaptability with a KUP interface adapter for data transmission to networks, PCs, and other devices without opening the scale housing

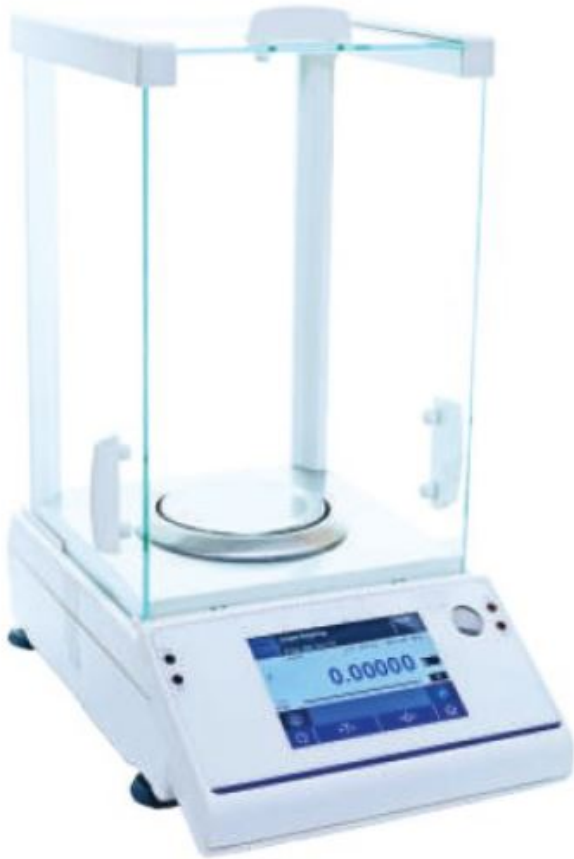
[Read More](#)

SKU:

Price:

Stock: instock

Categories: [Uncategorized](#)



Product Description

Specification :- Capacity : 60 g Readability : 0.01mg Repeatability : 0.03mg Max Linearity : 0.1mg Pan size (WxD) : Ø 80mm Stabilization Time : 6 Sec Calibration : Internal Display : Touch screen Power Supply : 100 – 240 V~, -10% | +10%, 50 – 60 Hz, 0.2 A Interface : mini USB

Interface Features :- * Rectangular all Glass Draft Shield opening from three sides * Level Indicator Level indication on front display * Easy to clean and operation

SPARES

ACCESSORIES :- * Instruction Manual * Power Plug & Cable * Warranty Card



[Read More](#)

SKU:

Price:

Stock: instock

Categories: [Uncategorized](#)

Product Description

Specification :- Capacity : 220 g Readability : 0.1 mg Repeatability : < + 0.1 mg Max Linearity : < + 0.2 mg Pan size (WxD) : 90mm Calibration : Internal **Features :-** * Rectangular all Glass Draft Shield opening from three sides * High Contrast Liquid Crystal Backlit Display) * Stainless steel weighing pan with removable dust and spill rings * Standard RS 232 interface. * Hanger for below balance weighing * AC Adapter * Both Side Tare Key * Motorized internal Calibration with built-in weight * Easy to read large backlight LCD display with A.E.P. **SPARES**

ACCESSORIES :- * Instruction Manual * Power Plug & Cable * Warranty Card



[Read More](#)

SKU:

Price:

Stock: instock

Categories: [Uncategorized](#)

Product Description

Specification :- Storage capacity : 06 Body storage Dimension, Outer : 2946 x2363x 2215 (WxDxH) Type of insulation : PUF panels Thickness of insulation : 80mm Temp. Range : +2 TO +6 Deg C Controller : Microprocessor based controller Temperature Display : Digital LED Material : Stainless Steel 304 Door : Outer front doors will be double walled Insulated : Puf Insulation : Polyurethane foam insulation with a thickness of 80mm. Body Trays : Body tray made of Stainless steel 304 GRADE Interior lighting : Vapours proof Incandescent lighting Refrigeration system : RTU-10 WITH forced air circulation to maintain temperature Compressor : Reciprocating type, Heavy duty Air-cooled compressor. Noise level : (<60dB) Condenser : Highly efficient condenser with automatic condensate evaporating system Evaporator : Internal evaporator system Forced draught Air Circulation : Forced air circulation to maintain chamber uniformity Power Supply : 220 volts, 50Hz / 110 volts, 60Hz. Refrigerant : R404A **SPARES**

ACCESSORIES :- * Instruction Manual * Warranty Card



Price:

Stock: instock

Categories: [Uncategorized](#)

Product Description

Description :- Carbon dioxide (CO₂) incubators provide optimal growing conditions and contamination prevention for valuable cell cultures. Wide range of CO₂ incubators, ranging from a small capacity and volume to a large scale capacity cabinet. All the CO₂ incubators are build with the patented Water Jacket and Air Jacket systems, which minimizes the risk of condensation at the present and in the future. **Technical Specification :-** External casing : Stainless Steel Programs : 80 programs Internal volume : 150 Litres. Temp uniformity : < +/- 0.3 Deg C CO₂ range : 0 % to 20 %. No. of shelves : 2 Nos Display : TFT Color display Power : 230V, 50/60 Hz Supply. Setting accuracy : 0.1 Deg C Material of shelves : Stainless Steel Temperature range : Ambient + 5 Deg C to 50 Deg C. Temp variation : 37 Deg C < +/- 0.1 Deg C Rear housing material : Zinc plated stainless steel. Interior chamber material : Stainless Steel (ASTM 304). Sensor : IR type & 2 independent PT 100 sensors **Features :-** - Fitted with a small fan for circulating the Co₂. - Adjustable over temperature protection controller class 3.3 - Internal data logger capable of storing the test data - Facility to be recalibrated without connecting to an external PC - Facility to display the temperature in either °C or °F as and when required. - Equipped with standard factory calibration certificate at 37 Deg C, 5% co₂. - Sterilise

Sieve Shaker (AGN-260)

[Read More](#)

SKU:

Price:

Stock: instock

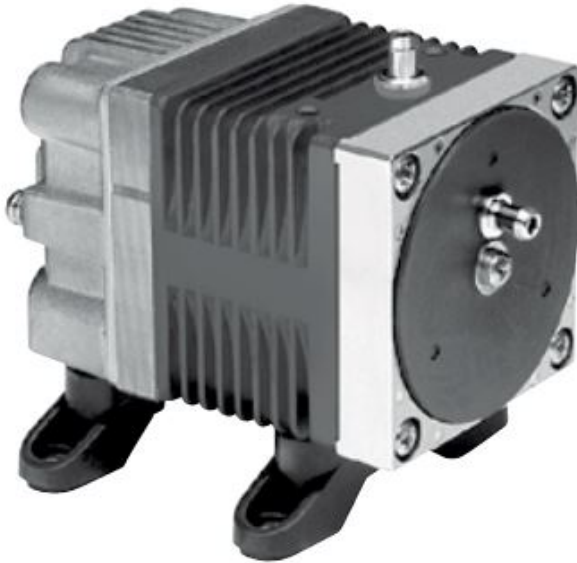
Categories: [Uncategorized](#)



Product Description

Mode of operation Two dimensional : Horizontal circular and vertical tapping motion

Operation movement Horizontal circular motion : 260-300 Vertical tapping : 140-160 Size range : 20 μ m-2 mm Digital timer settings : 10-60 mins Tolerance : 0.1 seconds Oscillation displacement : 1-1/8" x 7/16" Noise level : 85 decibel Sieve diameter : 8" No. of Sieves : 7 Nos. Depth to mesh : 50 mm Height : 65mm Sieve compliance : DIN 3310-1 & ASTM E-11-16 standards **Test Sieves With test :** a) 500 micron/ 35 mesh b) 425 micron/ 40 mesh : Qty : 1 No. c) 355 micron/ 45 mesh : Qty : 1 No. d) 300 micron/ 50 mesh : Qty : 1 No. e) 250 micron/ 60 mesh : Qty : 1 No. f) 180 micron/ 80 mesh : Qty : 1 No. g) 125 micron/ 120 mesh : Qty : 1 No. h) 106/105 micron/ 140 mesh : Qty : 1 No. i) 75 micron/ 200 mesh : Qty : 1 No. j) 45 micron/ 325 mesh : Qty : 1 No. k) Collecting pan : Qty : 1 No. 1) Top lid (for sieve sets) : Qty : 1 No. Sieve mesh material : SS316 Material of frame, lid and pan : SS304 Sieving Aids : Rubber balls (Size : 20 mm, wt. 5 g) Rubber Stoppers (for fixing to lid of sieve set)



[READ MORE](#)

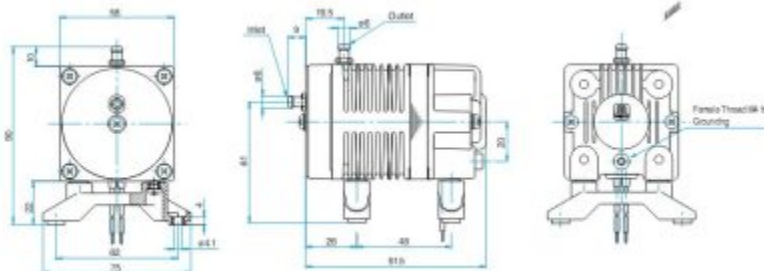
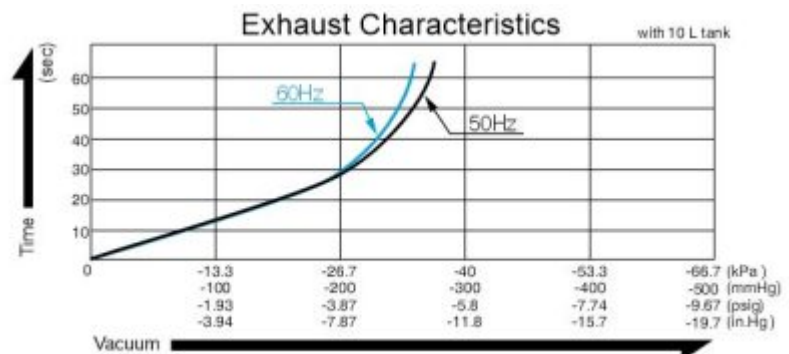
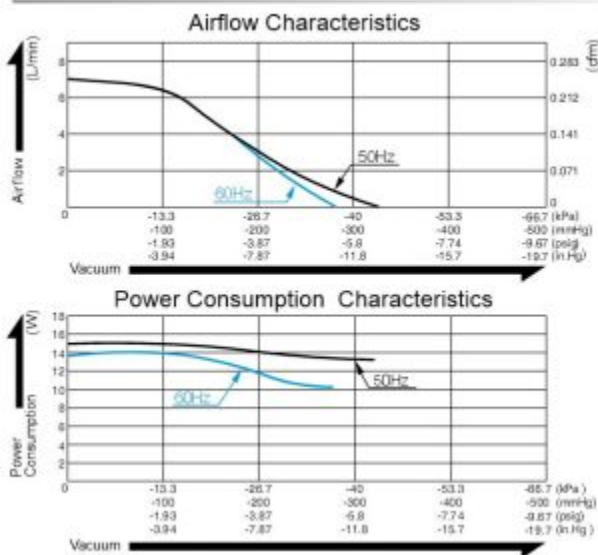
SKU:

Price:

Stock: instock

Categories: [Uncategorized](#)

Airflow & Power Consumption





AGN ENTERPRISES

MANUFACTURER & SUPPLIER
ALL KINDS OF LABORATORY EQUIPMENTS



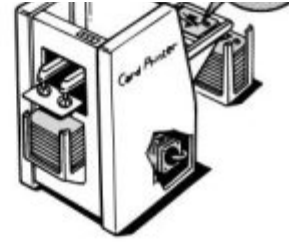
#startuptindia

Coil Insulation Class	Class B for UL
Mounting Dimensions	48 (L) x 62 (W) mm
	1-57/64" (L) x 2-7/16" (W)
Weight	0.7 kg
	1.54 Lbs
	200 mm
	7-7/8"

Application Examples

Dripping Machine

Paper Card Dispenser



[Read More](#)

SKU:

Price:

Stock: instock

Categories: [Uncategorized](#)



Product Description

Specification :- Type : Bench top model Display : Touch screen on door Timer : 1 min to 99 hrs. Lamp : UV lamp Temp. accuracy : $\pm 0.1^{\circ}\text{C}$ No. of shelves : 2 Speed : 25 -400 rpm Chamber material : Stainless steel Working Temperature range : 15°C to 50°C Light : Fluorescent light Certification : CE certified Alarm : Audible and visual alarm Mechanism : Triple eccentric drive mechanism Capacity : 5L, 50ml Flask and 15ml tube racks Platform size : 450mm x 300mm x 75 mm (W x D x H) Warranty : 2 years

Features :- -Easily fixable Spring type flask holder - Timer to set incubation and shaking times -Memory for automatic power failure restart -One shaking shelve another without shaking -Brushless with counter balancing to provide vibration free operation

Accessories :- -5 KVA stabilizer -Cord & plug -Warranty Card -Instruction Manual