

AND VACUUM PUMP

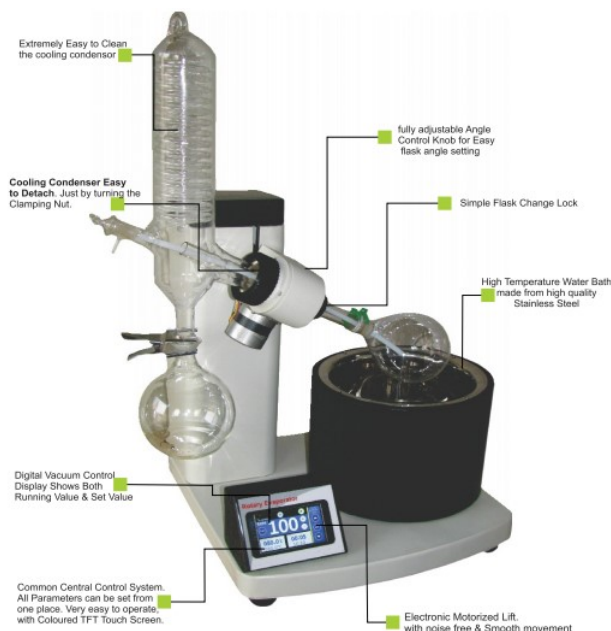
[Read More](#)

SKU:

Price:

Stock: instock

Categories: [Uncategorized](#)



Product Description

TECHNICAL SPECIFICATIONS The system include a motorized lift/handle with non-slip feature censoring safety by preventing scalding from the bath liquid. Rotary vacuum evaporator equipped with a 3.5-inch Digital LCD display for the heating bath. Vertical condenser with surface area 1400 cm². Motorized lift/hand lift capable of reaching 155 mm or more. Better Metal base Heating bath supported. Detachable panel with optional extension cable Standby button to halt all functions and elevate the evaporating flask from the heating bath. A heating bath with a diameter of 255mm, ± 5 mm, and a volume capacity of 4.5 L, capable of reaching temperatures up to 200 °C & Secondary temperature cut off 250 °C. Equipped with a drain port for removing hot water or oil to prevent splashes and scalding. Receiving flask capacity one liter fitted with a ball joint. The temperature control for the heating bath provided be electronic/digital. Clamping sleeves for easy removal of vapor tube to avoid breakage. Vapour tube with sleeve for easy removal and cleaning. Splash water and dust protected detachable panel. Locking facility for set temperature and rotation speed. Construction material for the bath must be stainless steel AISI 316L. Scale of rotation speed 20-270 RPM. It must have a standby function and residual heat warning for heating bath temp. 50 °C. Separate operating knobs for adjusting heating & rotational. Borosilicate Glass Assembly with double coiled condenser. Equipped with a rotation speed indicator controlled electronically with LED display. Brushless DC motor with electronic speed control. Sample flask capacity Provided be 50 ml to 5

Cooled Incubator

Features :- * Feed forward function to input the operating conditions of the compressor * 12-step repeat from 1 - 98 times or unlimited programmed operations and Minimum 10 programs memorized * CFC-free Foamed-in-place Rigid Polyurethane Insulator & Hermetic Compressor * Triple-pane Glass Observation Window plus 15W Fluorescent Lamp * Independent Over-Temp. Protection Device isolated from main circuit * Programmed Memory Backup & Automatic Return Buzzer Switch

[Read More](#)

SKU:

Price:

Stock: instock

Categories: [Uncategorized](#)



Product Description

AGN-109 AGN BOD Incubators are especially useful for determining levels of organic matter and nitrogen in waste water samples. These incubators are also called low temperature incubators. The BOD incubator provides the required temperature for the growth of microorganisms. In microbiology laboratories, it is broadly used for cell culture and fungal growth, BOD test, fermentation, crop and physiology, and various pharmaceutical tests etc. Trouble Monitor for Self-Diagnostic Function & provided with Key Lock Switch. **Features :-** * Feed forward function to input the operating conditions of the compressor * 12-step repeat from

Technical Specification Function : Programmable 3-step operational function Controller : Microprocessor Control with a heater PID and compressor Temperature range : -10°C to 50°C Capacity : 235 Litres Shelves material : P. E coated steel wire, adjustable No. of shelves : 5 Nos. Compressor : Air circulation fan with Hermetic type Compressor Alarm : Audible and Visual Alarms Temperature controllability : ± 0.2 deg. at Heater PID control Temperature uniformity : ± 0.5 deg. Exterior finish : Baked acrylic finish on galvanized steel Interior finish : Stainless steel Door : Baked acrylic finish on galvanized steel triple-pane glass

ROTARY EVAPORATOR, PUMP AND CONTROLLER (AGN-RE-100)

[Read More](#)

SKU:

Price:

Stock: instock

Categories: [Uncategorized](#)



Product Description

Specification :- Type : Electronic lift Temperature range : Ambient to 220°C Heating power : 1500W. Operating voltage : 220 – 240 V at 50/60 HZ Display : LCD display Temperature deviation : at 2°C. Rotation speed : adjustment 20 to 280 RPM. **Features :-** - Cordless power



AGN ENTERPRISES

MANUFACTURER & SUPPLIER
ALL KINDS OF LABORATORY EQUIPMENTS



external moisture formed on condenser - Provided with flask of 1000 ml each flask with flask joint SJ29/32 - Evaporation flask feeding via stopcock. - Rust free body material - Infrared bi-directional communication between heating bath and rotary evaporator **Vacuum Pump** : Operating voltage : 220 – 240 V at 50/60 HZ Membrane Pump : Two stage PTFE with window heads Flow rate : 1.8 m³/hr. Vacuum : 5 mbar **Vacuum Controller** : Display : Touch screen Operating mode : Manual, Timer, Continuous, Drying etc. **Features :-** - Rotary knob / button Allows in both ways - Built in solvent library (extended version: 60 Solvents). - Allows to add and bookmark individual solvents - Distillation process starts directly after choosing solvent from the library. - Offers push notifications and live view of all process parameters on mobile devices. - All process are graphically displayed to facilitate the supervision of distillation - Data recording Set for further analysis and traceability purpose. - Enables to record all process parameters continuously **Accessories :-** - Cord & plug - Warranty Card - Instruction Manual

[Read More](#)

SKU:

Price:

Stock: instock

Categories: [Uncategorized](#)



Product Description

It is highly used in chemical industries, pharmaceutical industries and also higher learning institution

Features

- Digital LCD display of both rotation speed and heating temperature allows for optimal control of all distillation processes
- Automatic motor lift releases the evaporating flask to a safe position in case of power failure
- 5L heating bath with wide temperature range from room temperature to 180°C
- Water/oil heating mode can be changed only through a switch
- Overheating protection temperature at 220°C
- Boil-dry protection, automatically power off if heating without water/oil in the heating bath
- Speed range from 20 to 280rpm, and interval operation in clockwise and anticlockwise directions for drying process
- Condenser (cooling surface 1700cm²) with excellent cooling effect
- Ejection mechanism ensures easy removal of evaporating flask
- Double spring sealing ring made of PTFE provides an excellent sealing performance
- Optional glassware with explosion proof film available

Specification

- Evaporating Flask Volume : 50-5000mL(Optional Thickened glass axis compatible with 5L evaporating flask)
- Motor Type : Brushless DC motor
- Speed Range : 20-280rpm
- Display : LCD(speed, temperature, time)
- Direction of Rotation : Clockwise and

Relative Humidity : 80%RH Protection Class : IP20 USB Interface : Yes voltage/Frequency : 200-240V, 50/60Hz Power : 1500W **Optional Add-ons (Seals and other Accessories)** : vacuum seal PTFE+Viton Evaporation bottle spring Evaporation flask clip(red) NS29/42 Evaporation flask clip(green) NS24/40 Rotary Evaporator transparent safety shield Flask holder(50mL-1000mL) Flask holder(1L-20L)

FROSTLESS ULTRA LOW FREEZER -86

[Read More](#)

SKU:

Price:

Stock: instock

Categories: [Uncategorized](#)



Product Description

Features : * Vacuum release ports to release negative pressure after frequent door openings * Provided with Inverter compressors and hydrocarbon refrigerants * 80mm insulation material

before issues occur. † Protection from accidental setting or control panel † Audible & visual alarm for Compressor temp abnormality, Hi/Lo Temperature, door open, filter clog check, power failure, remote alarm, fan lock, sensor abnormality & part replacement notification * Provided with option to add Liquid Co2 Backup system **Technical Details:-** Type : Upright ultra low Capacity : 700 Liters External Dimensions : 1050 x 900 x 2000 mm(W x D x H) Controller : Microprocessor based Controller Temperature range : -40°C to -86°C. Temperature sensor : Platinum (Pt1000) Freezer Insulation : Polyurethane Foam (PUF) & Vacuum Insulation Panel (VIP) Door : Two VIP Insulated Inner doors No. of compartments : 4 Cooling System : Cascade cooling system Energy consumption : 8 kWh/day at -80°C ambient of 30°C Display : Touch panel LCD Port : USB port (Strip type temperature recorder) Locking system : Key screen lock Alarm : Audible & visual alarms Access port : 3 access ports Noise level : ≤52 db Certification : BIS/FDA (US) /CE(Europe) & ISO 9001 & 14001 certified Power requirement : 220-240 V; 50/60 Hz Rack material : Stainless steel racks **Accessories :-** - Servo stabilizer - Instruction Manual - Warranty Card

Inverted Fluorescence Microscope (AGN-IFM-040)

[Read More](#)

SKU:

Price:

Stock: instock

Categories: [Uncategorized](#)



Product Description

Specification :-

Nosepiece : 4 position B DIC

Illumination Transmitted : LED 10W



AGN ENTERPRISES

MANUFACTURER & SUPPLIER
ALL KINDS OF LABORATORY EQUIPMENTS



slides/culture flasks.

Objectives : Suitable for Bright-field /Phase Contrast & Fluorescence imaging.

Magnification : 10x/0.25 PH1 FWD 3-4 mm ; 20x/0.30 PH1 FWD 3.5-4.5mm & 40x/0.40-5.0 FWD 2.0-2.2 mm .

Fluorescence : Filter UV-For DAPI, Hoechst, Alexa Fluor 350. Filter Blue- for Rhodamine123, Fluo3, FITC/ethidium bromide. calcium green, Alexa488. GFP, Oregon green. Filter ~ Green- for TRITC. PE.Cy3. Alexa546,555.

Digital Camera : 5 Mega Pixel cooled digital camera with CMOS sensor technology.

Software : Imaging on PC, bar insert option, Annotation, Shading Correction, image overlay for Fluorescence & Intensity Measurement. Image enhancement through brightness, contrast, smooth/sharpen, background subtraction, shading correction, white balance.

PC Configuration : Core i5 Processor '3th Gen: RAM 16 GB minimum; 2 TB HDD; 2GB Nvidia Graphic

Card ; minimum Display resolution 1920x1024 or larger. 32-bit; Drive DVD-ROM drive; TFT LED Screen 23 inch Monitor; Multimedia Kit.

OS : Windows 10.

High resolution, pixel size 2.0µm X 2.0µm or 13 mm diagonal .

[Read More](#)

SKU:

Price:

Stock: instock

Categories: [Uncategorized](#)



Product Description

Description : AGN BOD Incubators are especially useful for determining levels of organic matter and nitrogen in waste water samples. These incubators are also called low temperature incubators. The BOD incubator provides the required temperature for the growth of microorganisms. In microbiology laboratories, it is broadly used for cell culture and fungal growth, BOD test, fermentation, crop and physiology, and various pharmaceutical tests etc. Trouble Monitor for Self-Diagnostic Function & provided with Key Lock Switch **Technical**

Specification : Function : Programmable 3-step operational function Controller : Microprocessor Control with a heater PID and compressor Temperature range : -10°C to 50°C Capacity : 235 Litres Shelves material : P. E coated steel wire, adjustable No. of shelves : 5 Nos. Compressor : Air circulation fan with Hermetic type Compressor Alarm : Audible and Visual Alarms Temperature controllability : ± 0.2 deg. at Heater PID control Temperature uniformity :

operations and minimum 10 programs memorized *CFC-free Foamed-in-place Rigid Polyurethane Insulator & Hermetic Compressor *Triple-pane Glass Observation Window plus 15W Fluorescent Lamp *Independent Over-Temp. Protection Device isolated from main circuit *Programmed Memory Backup & Automatic Return Buzzer Switch

Refrigerated Shaker Incubator (AGN-RSI-400)

[Read More](#)

SKU:

Price:

Stock: instock

Categories: [Uncategorized](#)



Product Description

Specification :- Type : Bench top model Display : Touch screen on door Timer : 1 min to 99

75 mm (W x D x H) warranty : 2 years **Features :-** -Easily fixable Spring type flask holder - Timer to set incubation and shaking times -Memory for automatic power failure restart -One shaking shelve another without shaking -Brushless with counter balancing to provide vibration free operation **Accessories :-** -5 KVA stabilizer -Cord & plug -Warranty Card -Instruction Manual

Low Suction Vacuum Pump for Oxygen Analyzer (AGN-SVP-230)

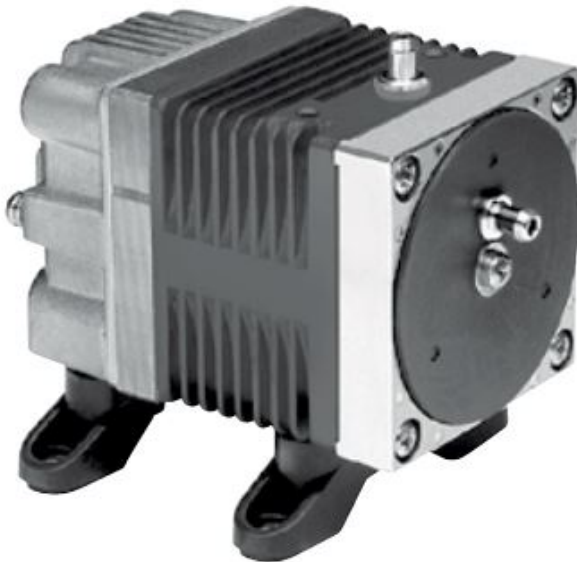
[Read More](#)

SKU:

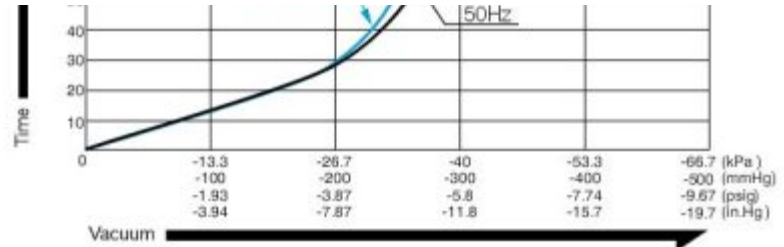
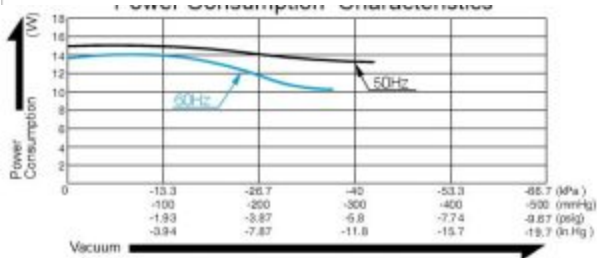
Price:

Stock: instock

Categories: [Uncategorized](#)



Product Description



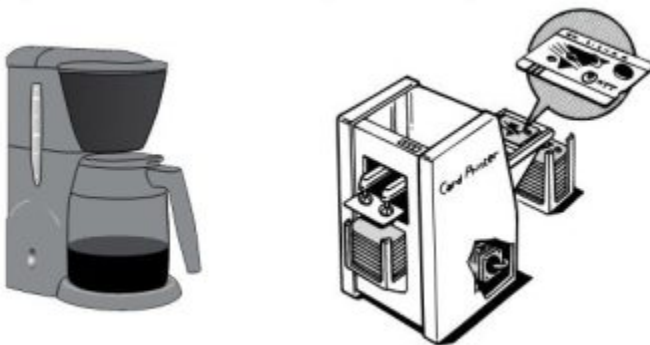
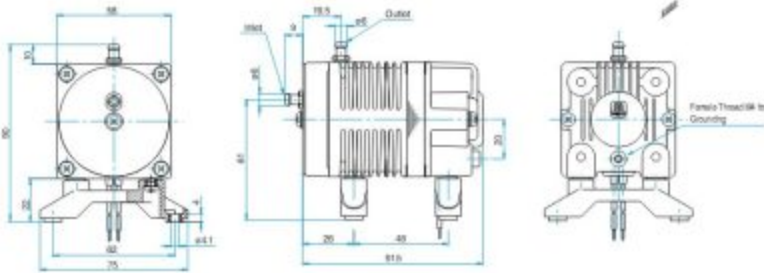
Specification

Attainable Vacuum	-33.3 kPa (~250 mmHg) -333 mbar -9.84 in. Hg	
Free Air Displacement	7 L/min 0.247 cfm	
Rated Voltage	115 V AC	230 V AC
	14 W	15 W
Rated Frequency	60 Hz	50 Hz
	10,000 hours (MTTF)	
Inlet	6 mm O.D. hose barb	
Outlet	6 mm O.D. hose barb	
Duty Cycle	Continuous	
Coil Insulation Class	Class B for UL	
Mounting Dimensions	48 (L) x 62 (W) mm	
	1-57/64" (L) x 2-7/16" (W)	
Weight	0.7 kg	
	1.54 Lbs	
	200 mm	
	7-7/8"	

Application Examples

Dripping Machine

Paper Card Dispenser





Price:

Stock: instock

Categories: [Uncategorized](#)

Product Description

Mode of operation Two dimensional : Horizontal circular and vertical tapping motion

Operation movement Horizontal circular motion : 260-300 Vertical tapping : 140-160 Size range : 20 μ m-2 mm Digital timer settings : 10-60 mins Tolerance : 0.1 seconds Oscillation displacement : 1-1/8" x 7/16" Noise level : 85 decibel Sieve diameter : 8" No. of Sieves : 7 Nos. Depth to mesh : 50 mm Height : 65mm Sieve compliance : DIN 3310-1 & ASTM E-11-16 standards

Test Sieves With test : a) 500 micron/ 35 mesh b) 425 micron/ 40 mesh : Qty : 1 No. c) 355 micron/ 45 mesh : Qty : 1 No. d) 300 micron/ 50 mesh : Qty : 1 No. e) 250 micron/ 60 mesh : Qty : 1 No. f) 180 micron/ 80 mesh : Qty : 1 No. g) 125 micron/ 120 mesh : Qty : 1 No. h) 106/105 micron/ 140 mesh : Qty : 1 No. i) 75 micron/ 200 mesh : Qty : 1 No. j) 45 micron/ 325 mesh : Qty : 1 No. k) Collecting pan : Qty : 1 No. 1) Top lid (for sieve sets) : Qty : 1 No. Sieve mesh material : SS316 Material of frame, lid and pan : SS304 Sieving Aids : Rubber balls (Size : 20 mm, wt. 5 g) Rubber Stoppers (for fixing to lid of sieve set)



Price:

Stock: instock

Categories: [Uncategorized](#)

Product Description

Description :- Carbon dioxide (CO₂) incubators provide optimal growing conditions and contamination prevention for valuable cell cultures. Wide range of CO₂ incubators, ranging from a small capacity and volume to a large scale capacity cabinet. All the CO₂ incubators are build with the patented Water Jacket and Air Jacket systems, which minimizes the risk of condensation at the present and in the future. **Technical Specification :-** External casing : Stainless Steel Programs : 80 programs Internal volume : 150 Litres. Temp uniformity : < +/- 0.3 Deg C CO₂ range : 0 % to 20 %. No. of shelves : 2 Nos Display : TFT Color display Power : 230V, 50/60 Hz Supply. Setting accuracy : 0.1 Deg C Material of shelves : Stainless Steel Temperature range : Ambient + 5 Deg C to 50 Deg C. Temp variation : 37 Deg C < +/- 0.1 Deg C Rear housing material : Zinc plated stainless steel. Interior chamber material : Stainless Steel (ASTM 304). Sensor : IR type & 2 independent PT 100 sensors **Features :-** - Fitted with a small fan for circulating the Co₂. - Adjustable over temperature protection controller class 3.3 - Internal data logger capable of storing the test data - Facility to be recalibrated without connecting to an external PC - Facility to display the temperature in either °C or °F as and when required. - Equipped with standard factory calibration certificate at 37 Deg C, 5% co₂. - Sterilise

6

BODY STORAGE FREEZER CABINET (AGN-152)



[Read More](#)

SKU:

Price:

Stock: instock

Categories: [Uncategorized](#)

Product Description

Specification :- Storage capacity : 06 Body storage Dimension, Outer : 2946 x2363x 2215 (WxDxH) Type of insulation : PUF panels Thickness of insulation : 80mm Temp. Range : +2 TO +6 Deg C Controller : Microprocessor based controller Temperature Display : Digital LED Material : Stainless Steel 304 Door : Outer front doors will be double walled Insulated : Puf Insulation : Polyurethane foam insulation with a thickness of 80mm. Body Trays : Body tray made of Stainless steel 304 GRADE Interior lighting : Vapours proof Incandescent lighting Refrigeration system : RTU-10 WITH forced air circulation to maintain temperature Compressor : Reciprocating type, Heavy duty Air-cooled compressor. Noise level : (<60dB) Condenser : Highly efficient condenser with automatic condensate evaporating system Evaporator : Internal evaporator system Forced draught Air Circulation : Forced air circulation to maintain chamber uniformity Power Supply : 220 volts, 50Hz / 110 volts, 60Hz. Refrigerant : R404A **SPARES**

ACCESSORIES :- * Instruction Manual * Warranty Card