



[Read More](#)

**SKU:**

**Price:**

**Stock:** instock

**Categories:** [Uncategorized](#)

## Product Description

**Specification :-** Capacity : 220 g Readability : 0.1 mg Repeatability : < + 0.1 mg Max Linearity : < + 0.2 mg Pan size (WxD) : 90mm Calibration : Internal **Features :-** \* Rectangular all Glass Draft Shield opening from three sides \* High Contrast Liquid Crystal Backlit Display) \* Stainless steel weighing pan with removable dust and spill rings \* Standard RS 232 interface. \* Hanger for below balance weighing \* AC Adapter \* Both Side Tare Key \* Motorized internal Calibration with built-in weight \* Easy to read large backlight LCD display with A.E.P. **SPARES**

**ACCESSORIES :-** \* Instruction Manual \* Power Plug & Cable \* Warranty Card



[Read More](#)

**SKU:**

**Price:**

**Stock:** instock

**Categories:** [Uncategorized](#)

## Product Description

**Specification :-** Storage capacity : 06 Body storage Dimension, Outer : 2946 x2363x 2215 (WxDxH) Type of insulation : PUF panels Thickness of insulation : 80mm Temp. Range : +2 TO +6 Deg C Controller : Microprocessor based controller Temperature Display : Digital LED Material : Stainless Steel 304 Door : Outer front doors will be double walled Insulated : Puf Insulation : Polyurethane foam insulation with a thickness of 80mm. Body Trays : Body tray made of Stainless steel 304 GRADE Interior lighting : Vapours proof Incandescent lighting Refrigeration system : RTU-10 WITH forced air circulation to maintain temperature Compressor : Reciprocating type, Heavy duty Air-cooled compressor. Noise level : (<60dB) Condenser : Highly efficient condenser with automatic condensate evaporating system Evaporator : Internal evaporator system Forced draught Air Circulation : Forced air circulation to maintain chamber uniformity Power Supply : 220 volts, 50Hz / 110 volts, 60Hz. Refrigerant : R404A **SPARES**

**ACCESSORIES :-** \* Instruction Manual \* Warranty Card



**Price:**

**Stock:** instock

**Categories:** [Uncategorized](#)

## Product Description

**Description :-** Carbon dioxide (CO<sub>2</sub>) incubators provide optimal growing conditions and contamination prevention for valuable cell cultures. Wide range of CO<sub>2</sub> incubators, ranging from a small capacity and volume to a large scale capacity cabinet. All the CO<sub>2</sub> incubators are build with the patented Water Jacket and Air Jacket systems, which minimizes the risk of condensation at the present and in the future. **Technical Specification :-** External casing : Stainless Steel Programs : 80 programs Internal volume : 150 Litres. Temp uniformity : < +/- 0.3 Deg C CO<sub>2</sub> range : 0 % to 20 %. No. of shelves : 2 Nos Display : TFT Color display Power : 230V, 50/60 Hz Supply. Setting accuracy : 0.1 Deg C Material of shelves : Stainless Steel Temperature range : Ambient + 5 Deg C to 50 Deg C. Temp variation : 37 Deg C < +/- 0.1 Deg C Rear housing material : Zinc plated stainless steel. Interior chamber material : Stainless Steel (ASTM 304). Sensor : IR type & 2 independent PT 100 sensors **Features :-** - Fitted with a small fan for circulating the Co<sub>2</sub>. - Adjustable over temperature protection controller class 3.3 - Internal data logger capable of storing the test data - Facility to be recalibrated without connecting to an external PC - Facility to display the temperature in either °C or °F as and when required. - Equipped with standard factory calibration certificate at 37 Deg C, 5% co<sub>2</sub>. - Sterilise

## Sieve Shaker (AGN-260)

[Read More](#)

**SKU:**

**Price:**

**Stock:** instock

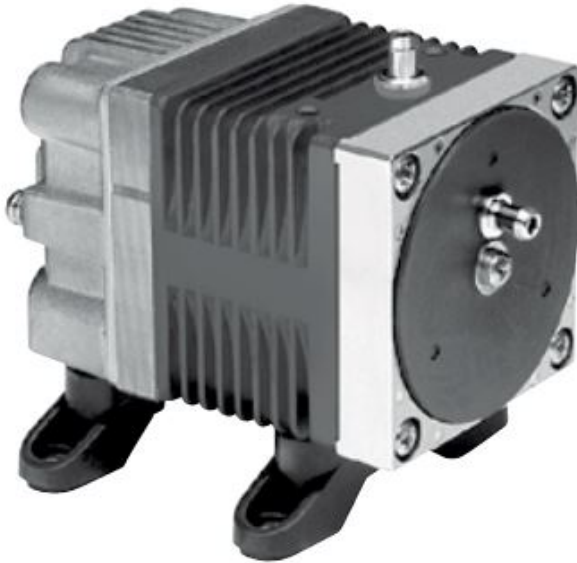
**Categories:** [Uncategorized](#)



### Product Description

**Mode of operation** Two dimensional : Horizontal circular and vertical tapping motion

**Operation movement** Horizontal circular motion : 260-300 Vertical tapping : 140-160 Size range : 20  $\mu$ m-2 mm Digital timer settings : 10-60 mins Tolerance : 0.1 seconds Oscillation displacement : 1-1/8" x 7/16" Noise level : 85 decibel Sieve diameter : 8" No. of Sieves : 7 Nos. Depth to mesh : 50 mm Height : 65mm Sieve compliance : DIN 3310-1 & ASTM E-11-16 standards **Test Sieves With test :** a) 500 micron/ 35 mesh b) 425 micron/ 40 mesh : Qty : 1 No. c) 355 micron/ 45 mesh : Qty : 1 No. d) 300 micron/ 50 mesh : Qty : 1 No. e) 250 micron/ 60 mesh : Qty : 1 No. f) 180 micron/ 80 mesh : Qty : 1 No. g) 125 micron/ 120 mesh : Qty : 1 No. h) 106/105 micron/ 140 mesh : Qty : 1 No. i) 75 micron/ 200 mesh : Qty : 1 No. j) 45 micron/ 325 mesh : Qty : 1 No. k) Collecting pan : Qty : 1 No. 1) Top lid (for sieve sets) : Qty : 1 No. Sieve mesh material : SS316 Material of frame, lid and pan : SS304 Sieving Aids : Rubber balls (Size : 20 mm, wt. 5 g) Rubber Stoppers (for fixing to lid of sieve set)



[READ MORE](#)

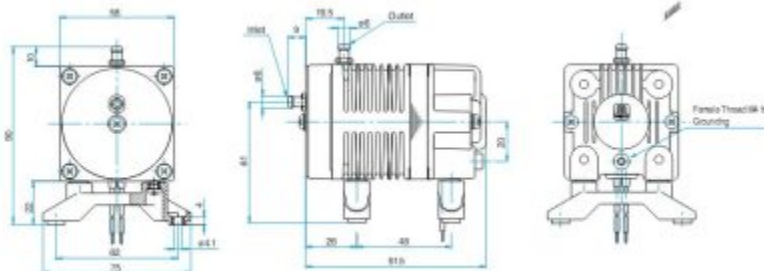
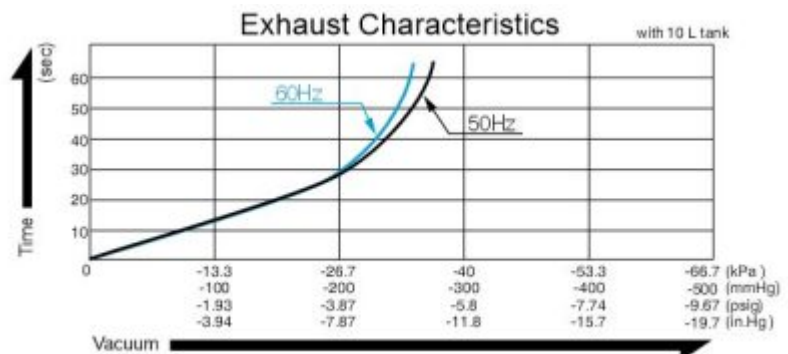
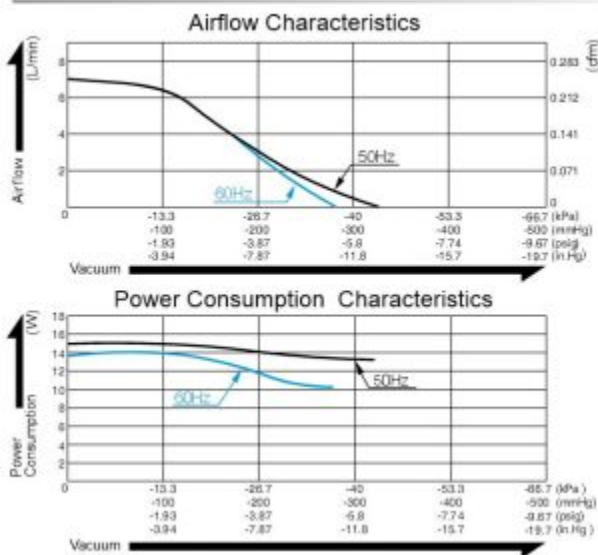
**SKU:**

**Price:**

**Stock:** instock

**Categories:** [Uncategorized](#)

## Airflow & Power Consumption







# AGN ENTERPRISES

MANUFACTURER & SUPPLIER  
ALL KINDS OF LABORATORY EQUIPMENTS



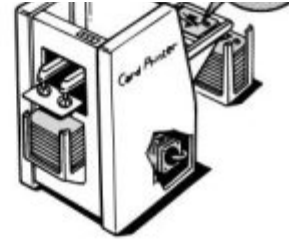
#startuptindia

Coil Insulation Class	Class B for UL
Mounting Dimensions	48 (L) x 62 (W) mm
	1-57/64" (L) x 2-7/16" (W)
Weight	0.7 kg
	1.54 Lbs
	200 mm
	7-7/8"

## Application Examples

Dripping Machine

Paper Card Dispenser



[Read More](#)

**SKU:**

**Price:**

**Stock:** instock

**Categories:** [Uncategorized](#)



## Product Description

**Specification :-** Type : Bench top model Display : Touch screen on door Timer : 1 min to 99 hrs. Lamp : UV lamp Temp. accuracy :  $\pm 0.1^{\circ}\text{C}$  No. of shelves : 2 Speed : 25 -400 rpm Chamber material : Stainless steel Working Temperature range :  $15^{\circ}\text{C}$  to  $50^{\circ}\text{C}$  Light : Fluorescent light Certification : CE certified Alarm : Audible and visual alarm Mechanism : Triple eccentric drive mechanism Capacity : 5L, 50ml Flask and 15ml tube racks Platform size : 450mm x 300mm x 75 mm (W x D x H) Warranty : 2 years

**Features :-** -Easily fixable Spring type flask holder - Timer to set incubation and shaking times -Memory for automatic power failure restart -One shaking shelve another without shaking -Brushless with counter balancing to provide vibration free operation

**Accessories :-** -5 KVA stabilizer -Cord & plug -Warranty Card -Instruction Manual

[Read More](#)

**SKU:**

**Price:**

**Stock:** instock

**Categories:** [Uncategorized](#)



## Product Description

**Description :** AGN BOD Incubators are especially useful for determining levels of organic matter and nitrogen in waste water samples. These incubators are also called low temperature incubators. The BOD incubator provides the required temperature for the growth of microorganisms. In microbiology laboratories, it is broadly used for cell culture and fungal growth, BOD test, fermentation, crop and physiology, and various pharmaceutical tests etc. Trouble Monitor for Self-Diagnostic Function & provided with Key Lock Switch **Technical**

**Specification :** Function : Programmable 3-step operational function Controller : Microprocessor Control with a heater PID and compressor Temperature range : -10°C to 50°C Capacity : 235 Litres Shelves material : P. E coated steel wire, adjustable No. of shelves : 5 Nos. Compressor : Air circulation fan with Hermetic type Compressor Alarm : Audible and Visual Alarms Temperature controllability :  $\pm 0.2$  deg. at Heater PID control Temperature uniformity :



operations and minimum 10 programs memorized \*CFC-free Foamed-in-place Rigid Polyurethane Insulator & Hermetic Compressor \*Triple-pane Glass Observation Window plus 15W Fluorescent Lamp \*Independent Over-Temp. Protection Device isolated from main circuit \*Programmed Memory Backup & Automatic Return Buzzer Switch

## Inverted Fluorescence Microscope (AGN-IFM-040)

[Read More](#)

**SKU:**

**Price:**

**Stock:** instock

**Categories:** [Uncategorized](#)



### Product Description

#### Specification :-

**Nosepiece :** 4 position B DIC

**Illumination Transmitted :** LED 10W

**Eyepieces :** Encoded 4 position Nosepiece and 10x with FOV 20 mm or FOV 23 and diopter adjustment eyepieces facility on both eyes for brightfield, darkfield, phase contrast and support DIC as well.

**Stage :** Mechanical XY Stage with specimen holders for Multi-well plate's/Petri dishes/Slides/culture flasks.

**Objectives :** Suitable for Bright-field /Phase Contrast & Fluorescence imaging.

**Magnification :** 10x/0.25 PH1 FWD 3-4 mm ; 20x/0.30 PH1 FWD 3.5-4.5mm & 40x/0.40-5.0 FWD 2.0-2.2 mm .

**Fluorescence :** Filter UV-For DAPI, Hoechst, Alexa Fluor 350. Filter Blue- for Rhodamine123,

Fluorescence & intensity measurement. Image enhancement through brightness, contrast, smooth/sharpen, background subtraction, shading correction, white balance.

**PC Configuration :** Core i5 Processor '3th Gen: RAM 16 GB minimum; 2 TB HDD; 2GB Nvidia Graphic

Card ; minimum Display resolution 1920x1024 or larger. 32-bit; Drive DVD-ROM drive; TFT LED Screen 23 inch Monitor; Multimedia Kit.

**OS :** Windows 10.

High resolution, pixel size 2.0pm X 2.0pum or 13 mm diagonal .

## FROSTLESS ULTRA LOW FREEZER -86

[Read More](#)

**SKU:**

**Price:**

**Stock:** instock

**Categories:** [Uncategorized](#)





# AGN ENTERPRISES

MANUFACTURER & SUPPLIER  
ALL KINDS OF LABORATORY EQUIPMENTS



(VIP) to reduce the frosting on inner doors \* Provided with castors for mobility and leveling feet for stability \* Two independent, insulated, and removable Achilles board inner doors. \* Outer door lock with provision to add an RFID access lock system. \* Latch-based Inner doors, not with magnetic closing \* Self-diagnosis function to continuously monitor & notify the abnormalities before issues occur. \* Protection from accidental setting of control panel \* Audible & visual alarm for Compressor temp abnormality, Hi/Lo Temperature, door open, filter clog check, power failure, remote alarm, fan lock, sensor abnormality & part replacement notification \* Provided with option to add Liquid Co2 Backup system **Technical Details:-** Type : Upright ultra low Capacity : 700 Liters External Dimensions : 1050 x 900 x 2000 mm(W x D x H) Controller : Microprocessor based Controller Temperature range : -40°C to -86°C. Temperature sensor : Platinum (Pt1000) Freezer Insulation : Polyurethane Foam (PUF) & Vacuum Insulation Panel (VIP) Door : Two VIP Insulated Inner doors No. of compartments : 4 Cooling System : Cascade cooling system Energy consumption : 8 kWh/day at -80°C ambient of 30°C Display : Touch panel LCD Port : USB port (Strip type temperature recorder) Locking system : Key screen lock Alarm : Audible & visual alarms Access port : 3 access ports Noise level :  $\leq 52$  db Certification : BIS/FDA (US) /CE(Europe) & ISO 9001 & 14001 certified Power requirement : 220-240 V; 50/60 Hz Rack material : Stainless steel racks **Accessories :-** - Servo stabilizer - Instruction Manual - Warranty Card

[Read More](#)

**SKU:**

**Price:**

**Stock:** instock

**Categories:** [Uncategorized](#)



## Product Description

It is highly used in chemical industries, pharmaceutical industries and also higher learning institution

**Features**

- Digital LCD display of both rotation speed and heating temperature allows for optimal control of all distillation processes
- Automatic motor lift releases the evaporating flask to a safe position in case of power failure
- 5L heating bath with wide temperature range from room temperature to 180°C
- Water/oil heating mode can be changed only through a switch
- Overheating protection temperature at 220°C
- Boil-dry protection, automatically power off if heating without water/oil in the heating bath
- Speed range from 20 to 280rpm, and interval operation in clockwise and anticlockwise directions for drying process
- Condenser (cooling surface 1700cm<sup>2</sup>) with excellent cooling effect
- Ejection mechanism ensures easy removal of evaporating flask
- Double spring sealing ring made of PTFE provides an excellent sealing performance
- Optional glassware with explosion proof film available

**Specification**

- Evaporating Flask Volume : 50-5000mL(Optional Thickened glass axis compatible with 5L evaporating flask)
- Motor Type : Brushless DC motor
- Speed Range : 20-280rpm
- Display : LCD(speed, temperature, time)
- Direction of Rotation : Clockwise and

Relative Humidity : 80%RH Protection Class : IP20 USB Interface : Yes voltage/Frequency : 200-240V, 50/60Hz Power : 1500W **Optional Add-ons (Seals and other Accessories)** : vacuum seal PTFE+Viton Evaporation bottle spring Evaporation flask clip(red) NS29/42 Evaporation flask clip(green) NS24/40 Rotary Evaporator transparent safety shield Flask holder(50mL-1000mL) Flask holder(1L-20L)

## ROTARY EVAPORATOR, PUMP AND CONTROLLER (AGN-RE-100)

[Read More](#)

**SKU:**

**Price:**

**Stock:** instock

**Categories:** [Uncategorized](#)



### Product Description

**Specification :-** Type : Electronic lift Temperature range : Ambient to 220°C Heating power : 1500W. Operating voltage : 220 – 240 V at 50/60 HZ Display : LCD display Temperature deviation : at 2°C. Rotation speed : adjustment 20 to 280 RPM. **Features :-** - Cordless power supply allows emptying and refilling of water bath without unplugging. - LCD display indicates set and actual values of heating bath temperature, rotation speed, and lift height adjustment. -





# AGN ENTERPRISES

MANUFACTURER & SUPPLIER  
ALL KINDS OF LABORATORY EQUIPMENTS



directional communication between heating bath and rotary evaporator **vacuum Pump** :  
Operating voltage : 220 – 240 V at 50/60 HZ Membrane Pump : Two stage PTFE with window  
heads Flow rate : 1.8 m<sup>3</sup>/hr. Vacuum : 5 mbar **Vacuum Controller** : Display : Touch screen  
Operating mode : Manual, Timer, Continuous, Drying etc. **Features :-** - Rotary knob / button  
Allows in both ways - Built in solvent library (extended version: 60 Solvents). - Allows to add and  
bookmark individual solvents - Distillation process starts directly after choosing solvent from the  
library. - Offers push notifications and live view of all process parameters on mobile devices. -  
All process are graphically displayed to facilitate the supervision of distillation - Data recording  
Set for further analysis and traceability purpose. - Enables to record all process parameters  
continuously **Accessories :-** - Cord & plug - Warranty Card - Instruction Manual



repeat from 1 - 98 times or unlimited programmed operations and Minimum 10 programs memorized \* CFC-free Foamed-in-place Rigid Polyurethane Insulator & Hermetic Compressor \* Triple-pane Glass Observation Window plus 15W Fluorescent Lamp \* Independent Over-Temp. Protection Device isolated from main circuit \* Programmed Memory Backup & Automatic Return Buzzer Switch

[Read More](#)

**SKU:**

**Price:**

**Stock:** instock

**Categories:** [Uncategorized](#)

## Product Description

**AGN-109** AGN BOD Incubators are especially useful for determining levels of organic matter and nitrogen in waste water samples. These incubators are also called low temperature incubators. The BOD incubator provides the required temperature for the growth of microorganisms. In microbiology laboratories, it is broadly used for cell culture and fungal growth, BOD test, fermentation, crop and physiology, and various pharmaceutical tests etc. Trouble Monitor for Self-Diagnostic Function & provided with Key Lock Switch. **Features :-** \* Feed forward function to input the operating conditions of the compressor \* 12-step repeat from 1 - 98 times or unlimited programmed operations and Minimum 10 programs memorized \* CFC-free Foamed-in-place Rigid Polyurethane Insulator & Hermetic Compressor \* Triple-pane Glass Observation Window plus 15W Fluorescent Lamp \* Independent Over-Temp. Protection Device isolated from main circuit \* Programmed Memory Backup & Automatic Return Buzzer Switch

**Technical Specification** Function : Programmable 3-step operational function Controller :



# AGN ENTERPRISES

MANUFACTURER & SUPPLIER  
ALL KINDS OF LABORATORY EQUIPMENTS



±0.5 deg. Exterior finish : Baked acrylic finish on galvanized steel Interior finish : Stainless steel  
Door : Baked acrylic finish on galvanized steel triple-pane glass